

Operation instruction

S4A-505MHW Wireless Infrared touchless 86*86mm switch

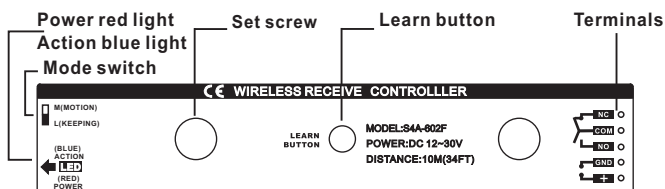
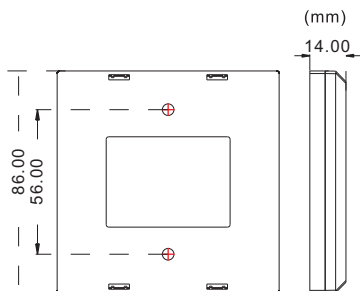
Make your choice.....



1 Safety Instruction

! Thanks for your purchasing, please refer to the following before using

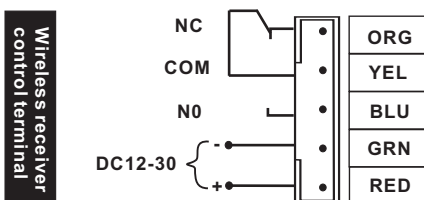
2 Overview



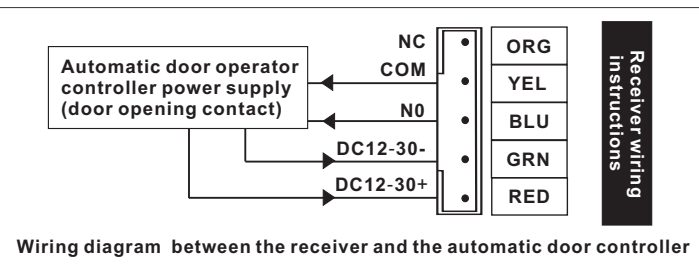
3 Overall characteristics

- Standard 86-type switch panel, wireless design, installation without wiring, installation is more flexible.
- The panel adopts laser engraving technology, with backlight display, fashionable
- Using 2.4G wireless communication technology, the frequency consistency is good, and the stability of wireless transceiver is high.
- The transmitter adopts low-power transmission technology, which has a long transmission distance, saves power and saves battery life.
- The receiver adopts self-learning code matching, which is convenient for customers to add induction switches at any time.
- The receiver's wide voltage input design, 12 30V DC power input is effective.
- When the remote control is valid, the blue light is on, you can confirm whether the switch is valid.
- Induction adopts infrared modulation and demodulation, not easy to be disturbed and misjudged.
- Non-contact induction by hand or reflective object, clean and hygienic
- Induction distance is 3-30cm adjustable, could be adjusted for different occasions
- High sensitivity infrared tube, timely and convenient induction

4 Input and output wire definition

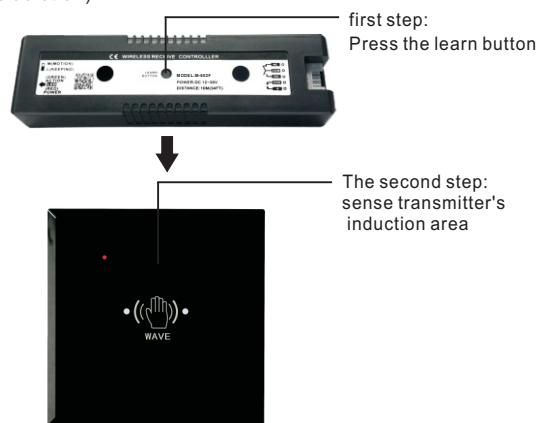


5 Receiver wiring instructions



6 Matching method

- This product is a self-learning code type, the transmitter code must be learned from this controller before use, Can learn up to 20 transmitters.
- Learning method: Press the receiver's learning button and then release, the blue indicator light, enter the learning state, At this time, and then sense the transmitter, and the blue light of the receiver will flash twice, then you can learn successfully. After 5 seconds, it will automatically exit and return to the standby state.
- Deletion method: Press and hold the learning button for 5 seconds, the blue light flashes quickly, you can delete all the codes. (This product does not have a single deletion)



7 Output status selection

- M** If the state selection switch is pulled to the M position, it is a jog output. Each time the transmitter senses, it will output a door opening signal of about 1.5S. Most receivers used with hand press switches are choose this mode
- L** If the status selection switch is pulled to the L position, it is a hold type output, and the output signal is kept. Each time the transmitter senses or touches, the output state will change once.

8 Parameters

Power supply (wireless receiver):	DC12~30V
Action current:	74mA(DC12V power supply)
Main contact capacity (wireless receiver):	1A 24VDC
Contact holding time (wireless receiver):	1.5S:
Standby current (transmitter):	≤80 μA
Transmitting current (transmitter):	12.55mA
Battery life (transmitter):	200 times/day, can use 220 days
Receiver sensitivity:	-95dbm
Launch distance:	no barrier distance 30M
Appearance size (transmitter):	86mm×86mm
sensing distance:	3-30cm
Appearance size (receiver):	110mm (L) ×30mm (W) ×15mm (H)