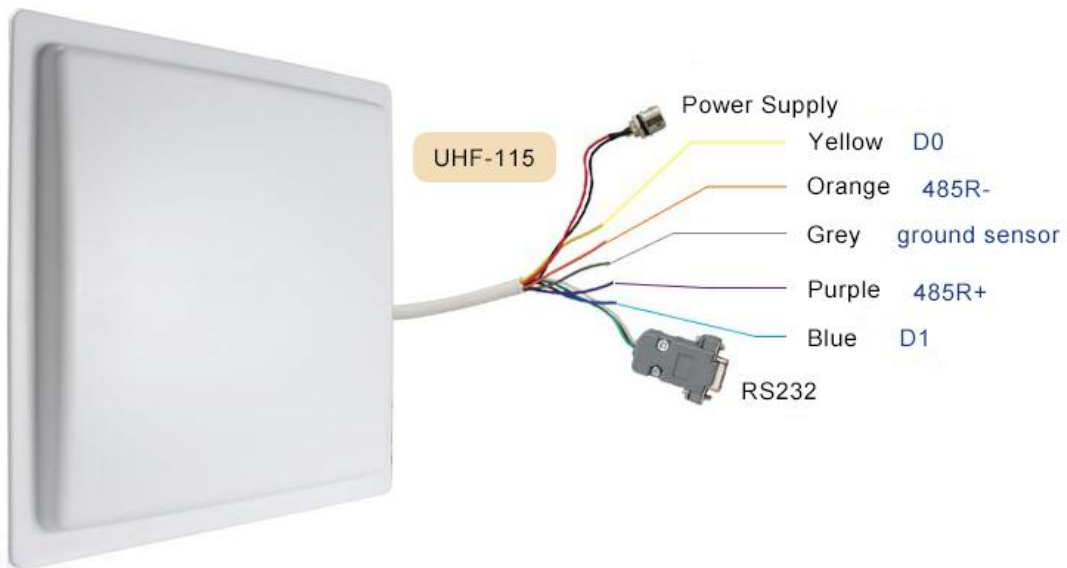
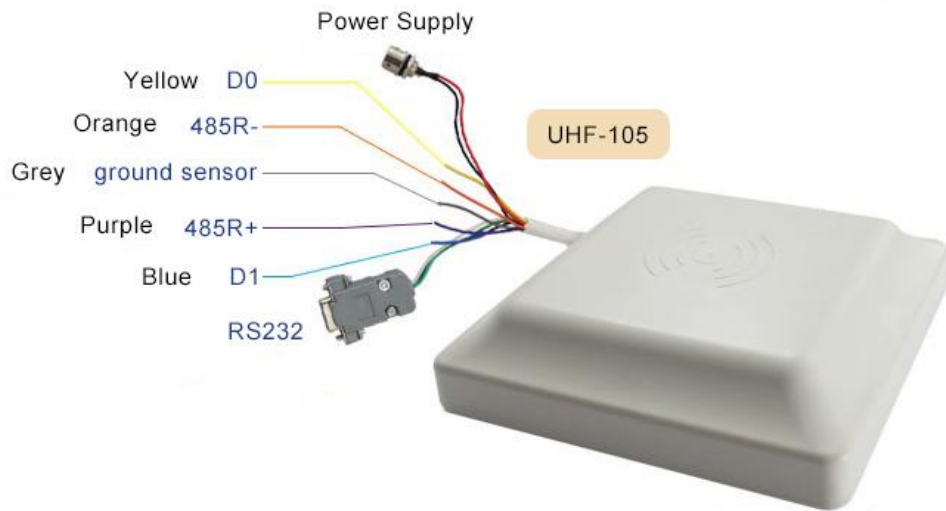




UHF-105	UHF-115	UHF-05
UHF Long range reader 1-5M	UHF Long range reader 5-15M	USB Card Issuing Device
		





UHF Cards and Tags(compatible with UHF-105 and UHF-115) - do LOGO customized FREE if based on 2000pcs

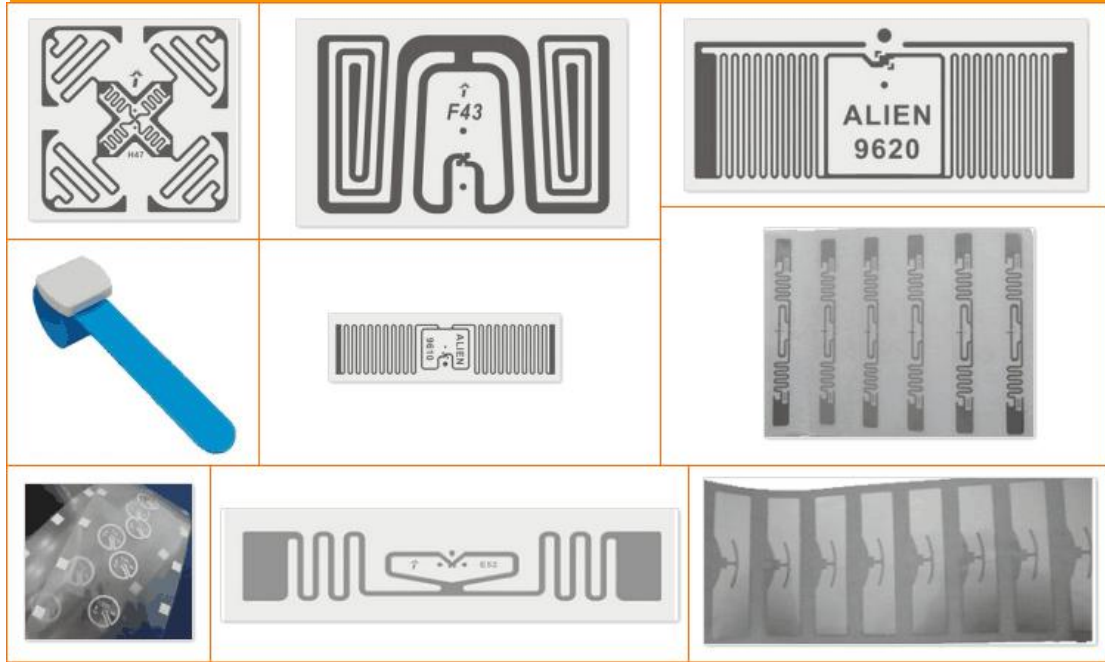
Model	UHF-01	UHF-02	UHF-03	UHF-04
Picture				

UHF Cards and Tags(compatible with UHF - 105 and UHF - 115)

Model	UHF-04	UHF-05	UHF-06	UHF-07
Picture				

UHF-115 UHF Long range reader, Reading distance: 5-15M

1	Working Frequency	National standard (920~925MHz), America standard (902~928MHz), or customize other frequency
2	Support Protocol	ISO18000-6B, ISO18000-6C(EPC GEN2)
3	Frequency Hopping	FHSS or fixed frequency set by software
4	Working Way	automatically reading card at regular time, can set reading card way
5	Frequency Power	0~30dBm, be adjusted by software
6	Reading Distance	5-15M
7	Reading Sensitivity	dual polarization reading
8	Reading Speed	one label 64 bit ID number < 6ms
9	Antenna	build-in circular polarization antenna, gain 8dB /build-in linear polarization antenna, gain 12dBi
10	Interface	RS485, RS232, Wiegand26, Wiegand34, RJ45
11	Working Voltage	DC+12V
12	Working Status Indication	buzzer
13	Power	1W
14	Working Temperature	-20°C ~ +80°C
15	Storage Temperature	-40°C ~ +125°C
16	Working Humidity	20% ~ 95% (no condensing)
17	Dimension	450mm×450mm×120mm
18	Weight	9.5KG



Latest Demo Ver:3.3.0.2

RFID Reader Demo - [Ver:3.3.0.2]

DISCONNECT(C) LANGUAGE RCP LOGGING(L) HELP(H)

READ DEMO | BASE SETTINGS | ISO18000-6B READ&WRITE | EPC(GEN 2) READ&WRITE

EPC(GEN 2) Identify

Card No: 00-00-00-00-00-00-00-00-00-00-00-00-00-00-00-00-00-00 Identify(E)

EPC(GEN 2) Read

Block: 1-EPC Address: 2 Length: 2 (Length not more 16)

Data(HEX): Read(A)

Data(ASCII):

EPC(GEN 2)Write Card

Block: 1-EPC Address: 2 Length: 2 (Length not more 16)

Data(HEX): 00-00 Write(B)

Data(ASCII): 00

Quick Write Card Zone(Weigand Card)Max 4 Byte

Card Type: 3byte(WG26) Card Position: 0 Auto Add 1 Auto Hex

DEC: 00000000 HEX: 00-00-00 WG: 000,00000 Plus 1

Write Num: Minus 1 Write Tag(F12)

Be Written Num:

Time	RCP Type	RCP Packet(HEX)	Time	Current Status
14:24:13 524	设备回复	CC FF FF BD 00 08 01 08 01 00 05 FF 03 FF 61	14:24:13 514	操作 基本参数 成功
14:24:13 534	下发命令	7C FF FF 31 32 00 23	14:24:13 524	操作 成功
14:24:13 534	设备回复	CC FF FF 31 00 03 01 08 01 F8	14:24:13 544	操作 输出参数 成功
14:24:13 654	设备回复	CC FF FF 31 00 03 01 08 01 F8	14:24:13 654	操作 输出参数 成功

CONNECTED | USB | V1.15 | Type:PC - Version:V3.67 - Address: 65535 操作 输出参数 成功